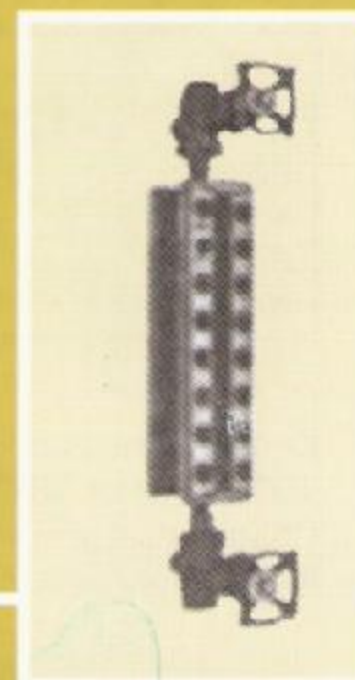
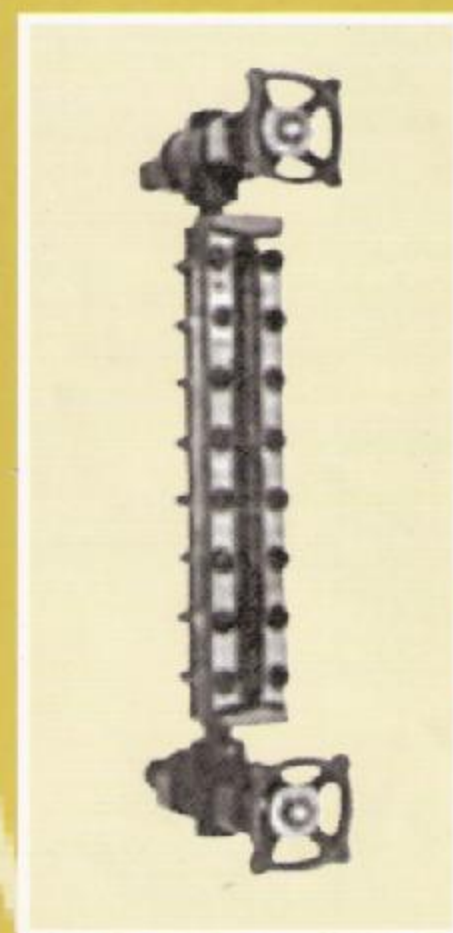
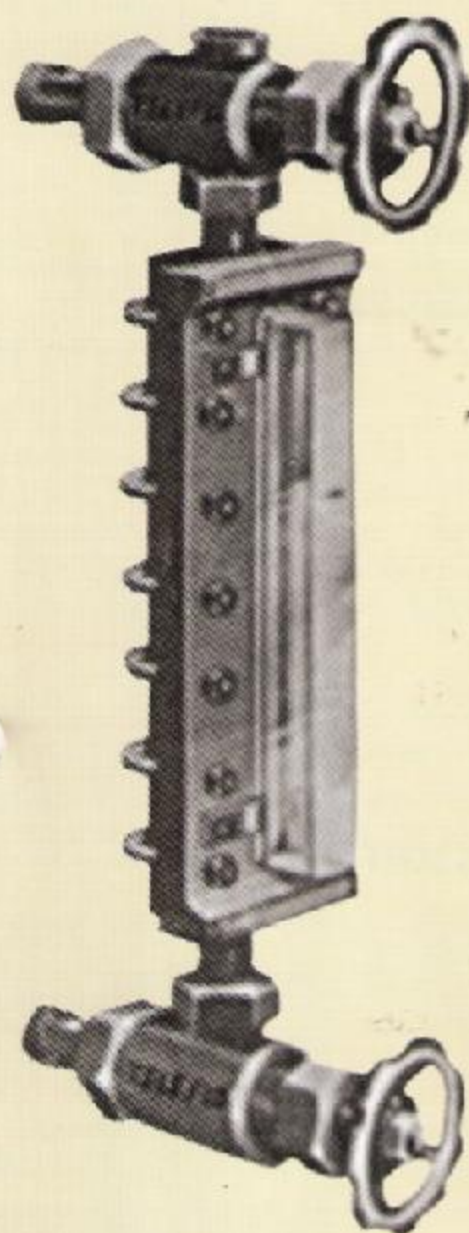




LEVEL GAUGES & VALVES

WITH

■ LLOYDS ■ C.C.E ■ IBR CERTIFICATES



FOR PROCESS INDUSTRIES

WHY FLAT GLASS LEVEL GAUGES?

You have designed your vessels with utmost care for getting the maximum economy. Also your investment on each vessel will be considerable. The return on your investment, should in no way, be hampered by defective Level gauges. Your level gauge should have the same strength as your vessel to withstand the high pressures to which it is subjected and the corrosive characteristics of the fluid. Also, your valuable process fluid should never leak out through the glass fitting, which is quite common in most of the tubular glass level gauges available in the market.

In industries, you may have to measure the levels of colourless liquids, interface of immisicible fluids, liquids with sub-zero temperatures and liquids with too much foaming. All these requirements can be met with by our latest types of flat glass level gauges.

MODEL NUMBERS

0 2 R C.S.N P

No of 14" sections

No of 10" sections

TYPE

Reflex - R
Transparent - T

MAIN CHAMBER MATL

Mild Steel - M.S
Carbon Steel - C.S
Stainless Steel - SS
Brass - BR
Polyvinyl Chloride - PVC
Polypropylene - PP

ILLUMINATORS

Non Explosion proof - N
Explosion proof - E
No illuminators - O

SHIELD

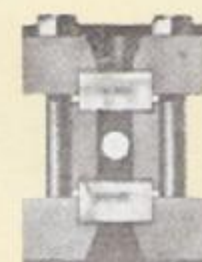
Plastic - P
Mica - M
Frost - F
No shield - O

Ex 02-RCS-NP is a level gauge with two sections each of 10" to make 20" overall length. Reflex type, Main Chamber of carbon steel with non explosion proof illuminators and Plastic shield.

LEVEL GAUGES SECTION VIEW

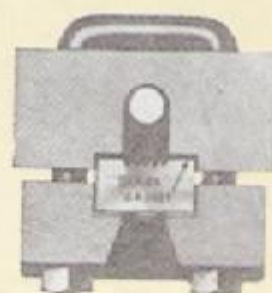


REFLEX



TRANSPARENT

LOW PRESSURE



REFLEX



TRANSPARENT

HEATING JACKET

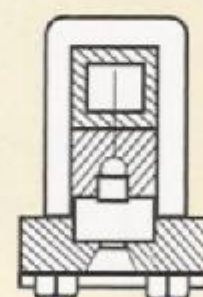


REFLEX

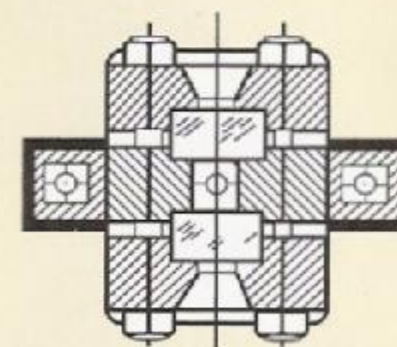


TRANSPARENT

LARGE CHAMBER

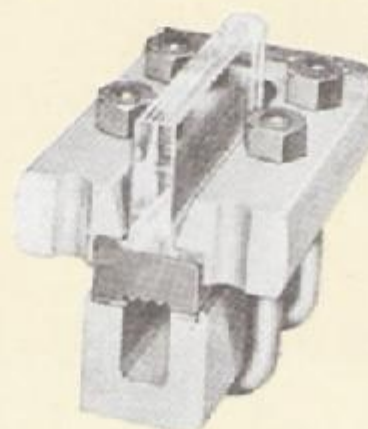


REFLEX

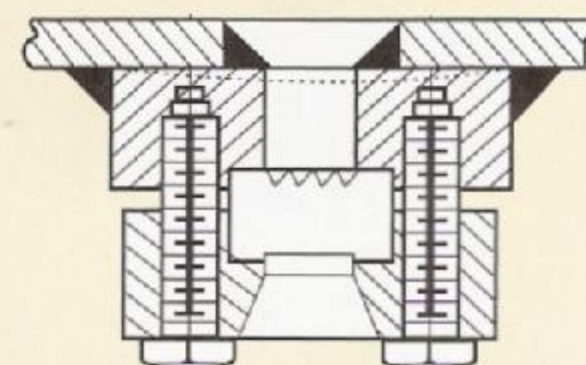


TRANSPARENT

HEATING JACKET



FROST SHIELD



WELDING PAD

FLAT GLASS LEVEL GAUGES

These gauges are constructed with a solid forged steel bar main chamber and cover plates recessed to have perfect alignment of gaskets and glass. Though rated for 2000 psig, these are light weight and hence do not need any cumbersome supports for medium lengths. With special main chamber construction these gauges can be supplied upto 3000 psig. Main Chambers are available in C.S, M.S, SS304, SS316, P.P., P.V.C., FRP and Rubber lined. Gaskets are of CAF, GRAFOIL, TEFLON, etc.

REFLEX GAUGES:

These are assembled with flat glasses with inner surfaces of reflecting prisms. Due to total internal reflection liquid level shows black in contrast to a mirror-like surface above. The gauges are used for services where observation is required at a distance and on low pressure boilers.

TRANSPARENT GAUGES:

These are assembled with two numbers of totally transparent toughened glasses to give a through vision of liquid levels. These gauges are recommended for interface levels, coloured fluids where colour is of interest to the process behaviour and services where excessive foaming may exist. In high pressure boilers these gauges are recommended to be used with mica shields.

GLASS:

Teleflo engineers continuous research, development and experimental studies on glass toughening and composition has made the tempered glasses used in these gauges most dependable providing a high strength resistant to both thermal and mechanical shocks and with the highest degree of visibility.

SPECIAL LEVEL GAUGES

Teleflo offers level gauges for every kind of application in the process industry and the following are very widely used. Apart from the types detailed below Teleflo can offer level gauges with rubber lining, lead bonding, steam traced and also with Boiler Inspector Certificates. Teleflo has already supplied to leading Indian Industries number of Boiler level gauges and are now planning a standardisation of the centre to centre distance of gauges used in Boilers in this country.

NON-FROST GAUGES:

For creogenic services where formation of frost on the gauge may cover the window, non frosting extensions made out of clear transparent perspex sheet prevents frost from covering the windows and thereby maintains clear visibility at all times. The frost shield extends beyond the cover plate by 2" or more as per the service temperature. The cover plate of the gauge clamps the flanged extension to the glass, thus maintaining direct contact with the gauge glass so that frost is prevented from forming. No sealing or drying agent is required. The flanged base of the frost preventing unit is surrounded by a gasket, so that, in case of accidental breakage of the frost preventing unit, the torque of the cover bolts will be maintained and leakage will not result. Non frosting gauges are available both in reflex and transparent types.

LARGE CHAMBER GAUGES:

TELEFO large chamber gauges are for boiling liquids having a tendency to surge. These gauges are recommended for liquids with high rate of bubbling and vapouring liquids. If the liquid being gauged has an unusually low boiling point, the gauge and valves should be insulated and the gauge equipped with a non-frosting unit.

TELEFLO large chamber gauges are for flat glass reflex or transparent design. The main chamber is out of 2"NB seamless pipe with suitable gaskets and cover plates. All parts are rust proofed. These gauges can be supplied to a maximum pressure rating of 40 kg/Cm Square.

HEATING JACKET: With External or Internal Heating tubes.

WELDING PAD TYPE: For Welding directly onto a tank or vessel.

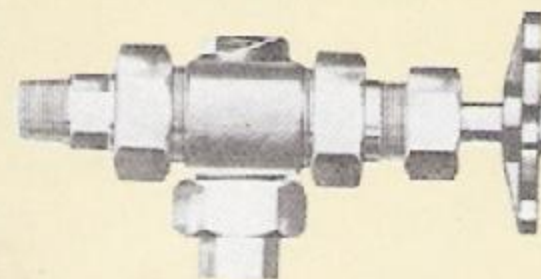
ACCESSORIES

1

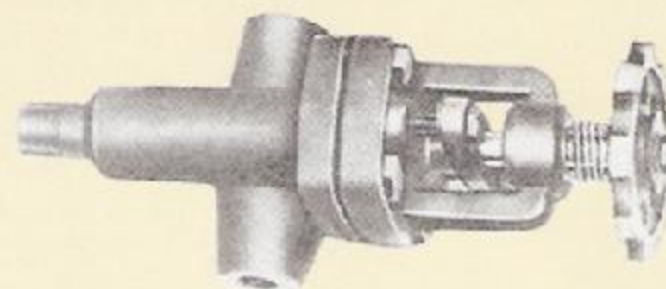
VALVE TYPES



M-500(screwed bonnet)

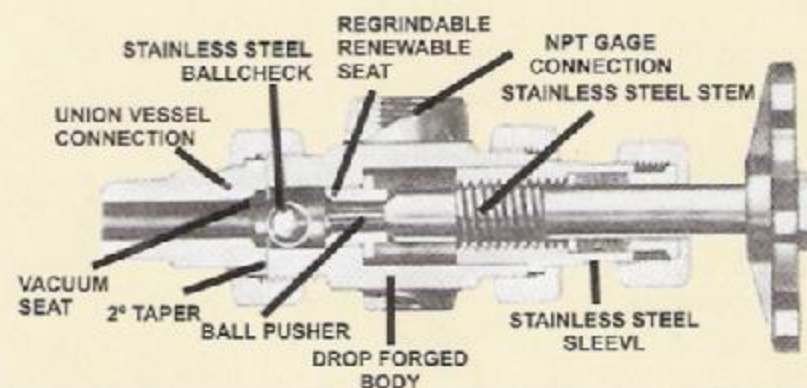


M-600(UNION bonnet)



M-800(bolted bonnet)

SECTION SHOWING BALL CHECK ARRANGEMENT



2

MEASURING SCALE With

Adjustable brackets for mounting to the gauge

3

EXPLOSION PROOF ILLUMINATORS



DIFFUSER TYPE



BOX TYPE

MODEL NUMBERS & DIMENSION DATA

Model No.	Section		Visible length mm B	Normal connection		Side conn.	
	Inch A	mm		C.C. Distance Inches	mm	C.C. dist. (Max.) Inches	mm
* 01	10	254	216	14 to 18	356 to 457	8	203
* 10	14	356	318	18 to 24	457 to 610	12	305
* 02	20	508	470	24 to 28	610 to 711	18	457
* 11	24	610	572	28 to 32	711 to 813	22	559
* 20	28	711	673	32 to 34	813 to 864	26	660
* 03	30	762	724	34 to 38	864 to 965	28	711
* 12	34	864	826	38 to 42	965 to 1067	32	813
* 21	38	965	927	42 to 44	1067 to 1118	36	914
04	40	1016	978	44 to 46	1118 to 1168	38	965
* 30	42	1067	1029	46 to 48	1168 to 1219	40	1016
13	44	1118	1080	48 to 52	1219 to 1321	42	1067
* 22	48	1219	1181	52 to 54	1321 to 1372	46	1168
05	50	1270	1232	54 to 56	1372 to 1422	48	1219
* 31	52	1321	1283	56 to 58	1422 to 1473	50	1270
14	54	1372	1334	58 to 60	1473 to 1524	52	1321
* 40	56	1422	1384	60 to 62	1524 to 1575	54	1372
* 23	58	1473	1435	62 to 64	1575 to 1626	56	1429
06	60	1524	1486	64 to 66	1626 to 1676	58	1473
* 32	62	1575	1537	66 to 70	1676 to 1778	60	1524
15	64	1626	1588	70 to 72	1778 to 1829	62	1575
* 24	68	1727	1689	72 to 74	1829 to 1880	66	1676
* 50	70	1778	1740	74 to 76	1880 to 1930	68	1727
33	72	1829	1791	76 to 78	1930 to 1981	70	1778
16	74	1880	1842	78 to 82	1981 to 2083	72	1829
35	78	1981	1943	82 to 84	2083 to 2134	76	1930
08	80	2032	1994	84 to 86	2134 to 2184	78	1981

Note: 1. Preferred section to be selected normally whenever possible.
2. Use side connection for more visibility.




REMOTE LEVEL INDICATOR

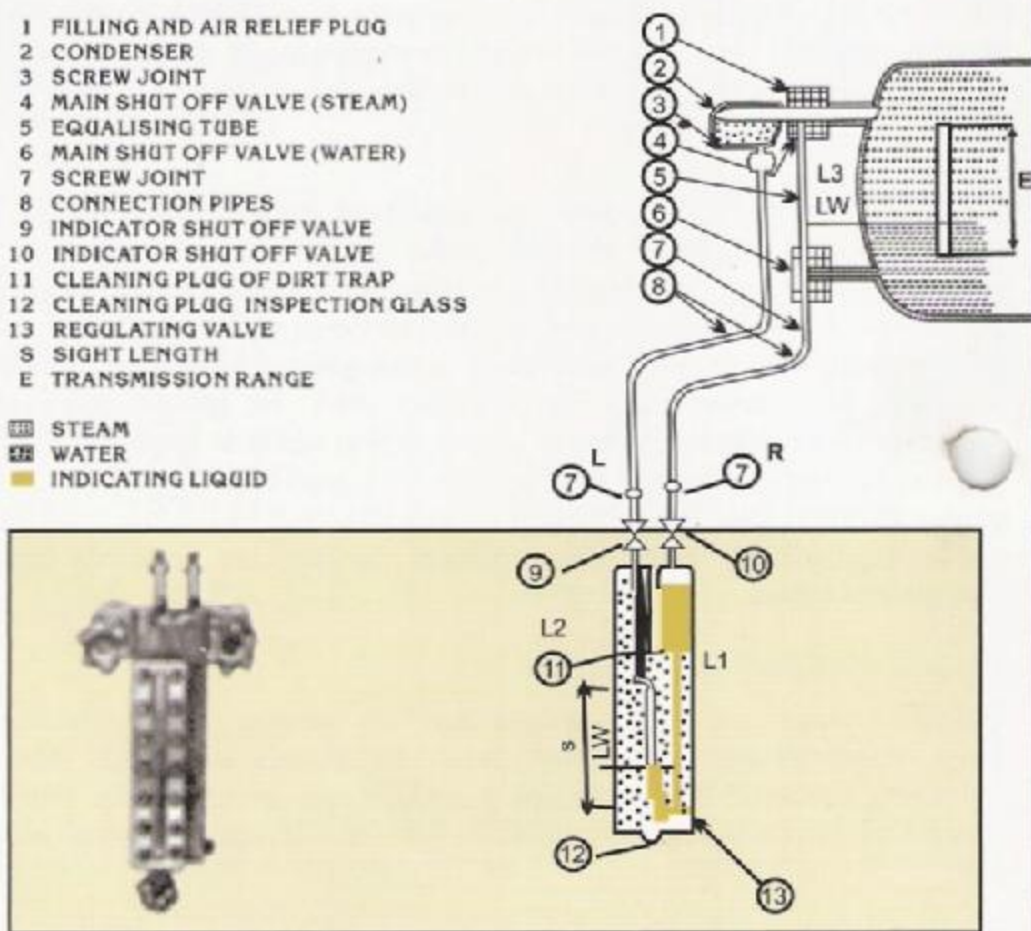
The Remote water-level indicator transmits the water-level fluctuations in the boiler drum, or in the tank to the working position of the attendant.

Above the water - insoluble and specifically heavier indicating liquid in leg 1, which is connected with the water space of the boiler, stands the boiler water. In leg 2 is the steam condensate from the steam space of the boiler. By recondensing the steam the water level in leg 2 is continually kept constant. Condensate in excess is continually flowing back through leg 3 into the boiler (in the case of cold pressure tanks a drip-water feed is fitted on the condenser). Maximum Pressure 100 kg/cm², and available in standard lengths of 350mm and above.

Every displacement of the water level in the boiler, resp. in leg 3, produces on analogous equal displacement of indicating liquid in the inspection glass. If e.g. the water in the boiler rises, the increasing water column in the legs 1-3 presses the red indicating liquid (sealing liquid) from leg 1 into leg 2 and indicates in the inspection glass of the indicator a rise of the water level. The water displaced from leg 2 flows from the condenser into leg 3 resp. into the boiler. If the water level in the drum falls, the indicating liquid in leg 2 resp. in the inspection glass, falls correspondingly. By condensation of water vapour in the condenser the water level in leg 2 is continually filled up and is consequently continually kept constant.

- 1 FILLING AND AIR RELIEF PLUG
- 2 CONDENSER
- 3 SCREW JOINT
- 4 MAIN SHUT OFF VALVE (STEAM)
- 5 EQUALISING TUBE
- 6 MAIN SHUT OFF VALVE (WATER)
- 7 SCREW JOINT
- 8 CONNECTION PIPES
- 9 INDICATOR SHUT OFF VALVE
- 10 INDICATOR SHUT OFF VALVE
- 11 CLEANING PLUG OF DIRT TRAP
- 12 CLEANING PLUG INSPECTION GLASS
- 13 REGULATING VALVE
- S SIGHT LENGTH
- E TRANSMISSION RANGE

 STEAM
 WATER
 INDICATING LIQUID



OUR OTHER PRODUCTS: Level Gauges, Level Switch, Flow Switches, Orifice Plates, Manometer, Rotameters, SRV, PRV, Ball Valves, Breather Valves, Gate-Globe-Check Valves, Flame Arrestors, Flush Bottom Valves, Strainers, Instrumentation Valves & Manifolds.

LEVEL GAUGES CATALOGUE NO LG/2200

TELEFLO INSTRUMENT CO. PVT. LTD.

70-D/3, M.D.S. Next to 'Bank of Maharashtra' Near. Chembur. Rly Station., Chembur, Mumbai-400 071
 Factory : 5, Shivam Industrial. Estate, off Govandi Station Road, Govandi, Mumbai (Bombay) -400 088
 Office : 528 0073/528 5345 Fact.: 556 58 29 Fax : (022) 528 06 42 Gram : TELEFLOW
 E-mail : teleflo@vsnl.com

TELEFLO

TELEFLO
VALVES & INSTRUMENTS