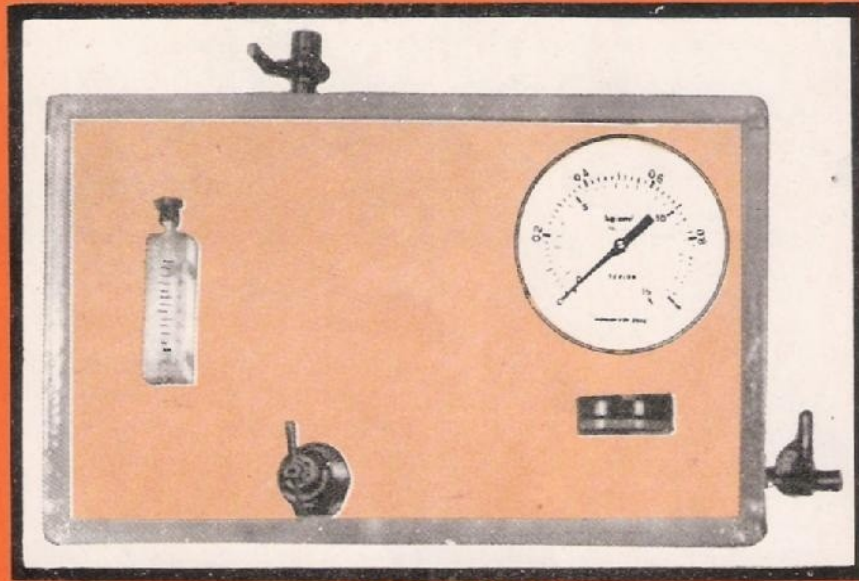
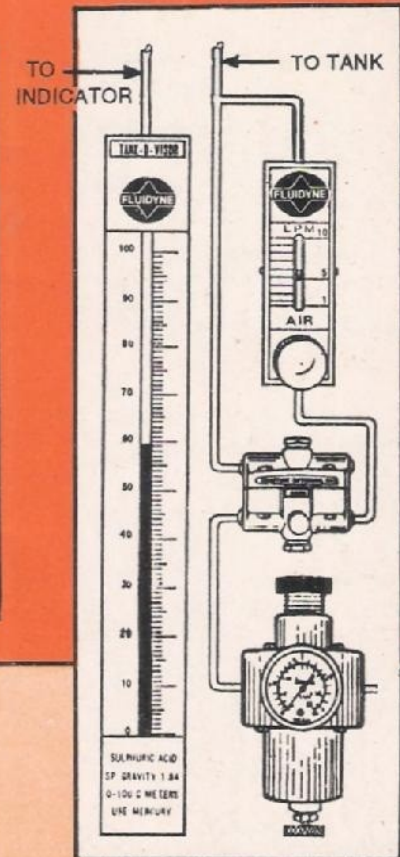


TELEFLO

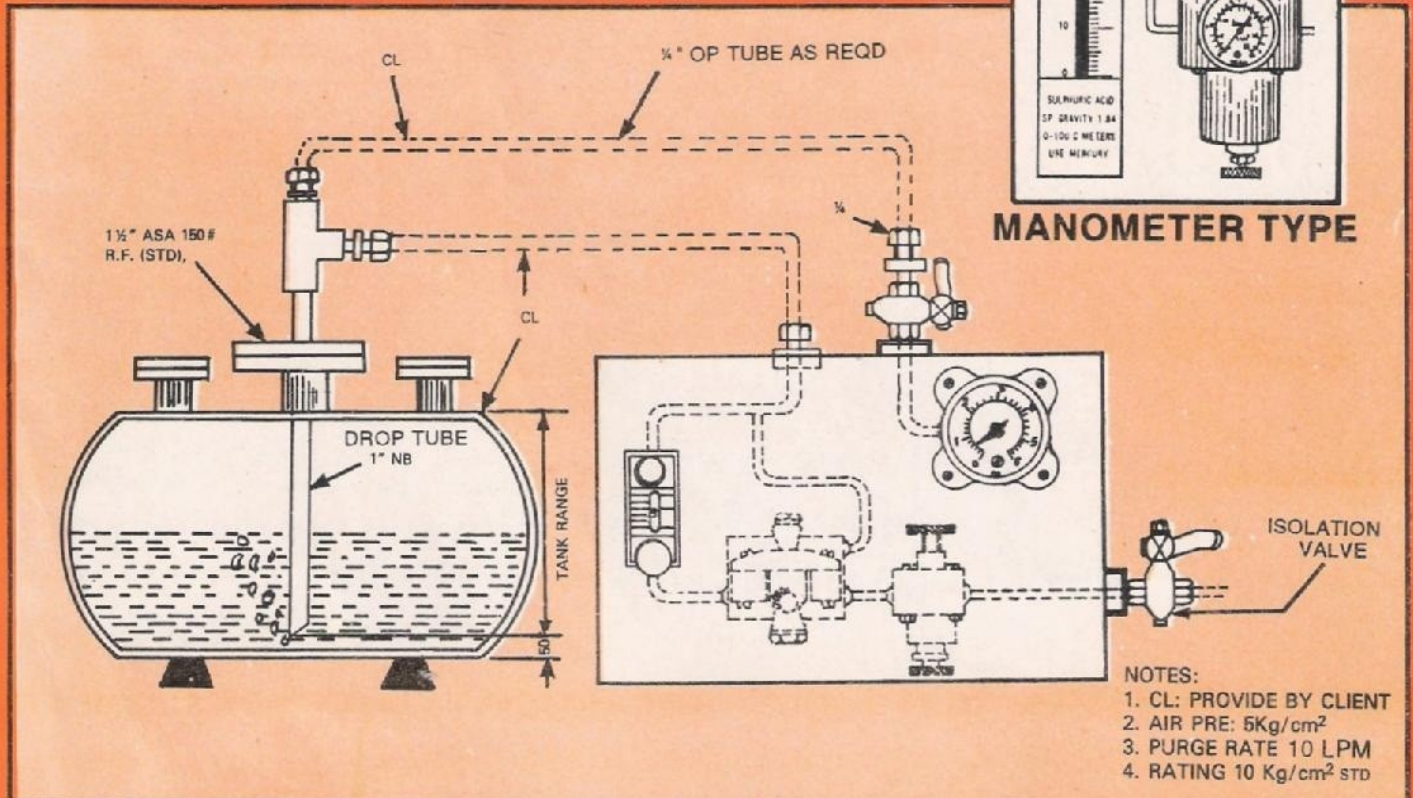
PURGE LEVEL INDICATOR



DIAL TYPE



MANOMETER TYPE



- NOTES:
1. CL: PROVIDE BY CLIENT
 2. AIR PRE: 5Kg/cm²
 3. PURGE RATE 10 LPM
 4. RATING 10 Kg/cm² STD

PURGE - LEVEL - INDICATOR

Remote Level Indicator for Storage Tanks, Process Vessels, Reactors, Settlers, Evaporators, Reboilers, Filters etc. The Tanks or vessels may be open, pressurised or evacuated and at any altitude and at a distance around a radius of 200 feet.

Ideally suited for the continuous indication of level of corrosive and hazardous chemicals. Centralised indication of level of various storage tanks is made feasible, which will help in economic and precise handling of liquids in tanks during transfer, mixing and despatch and also help in inventory control.

PRINCIPLE OF OPERATION

Air or some inert gas is made to purge in to the system at a small negligible rate (approx 5-10LPM) through a drop pipe fitted in the tank or vessel. The back pressure created by the level of liquid is transmitted to the remote indicator, which be a panel mounted or wall mounted single limb manometer. The Indicator can be directly calibrated in terms of the level of liquid in the tank either in length units, volume units or weight units. For pressurised or evacuated tanks an equalising line is provided and the tank pressure and the manometer pressure are equalised.

The system will consist of the following :

1. Level Indicator (Dial Type or Manometer Type)
2. Purge rate Indicator (Rotameter or Bubbler) (SS/AL) (G.M./S.S.)
3. Drop pipe (C.S./S.S./P.V.C./P.P.)
4. Constant differential pressure & flow controller (AL)
5. Air filter regulator (AL) with drain cock and output gauge

SPECIFICATIONS

Wall or Pannel Mounted type Indicator, mounted on M.S. or aluminium channel and finished in grey or black, Dial type indicator or Manometer type with Reservoir blocks and catch pots made of suitable material, Glass tubes of 6 mm OD or 10 mm OD with gland packing at the top and bottom. Connections ¼" BSP socket type standard. Special adaptors for other sizes. Scale made of acrylic plastic with lines and numerals engraved in black. Scale can be adjusted from outside by means of a micrometer screw. The scale and glass will be protected by a clear acrylic plastic cover on the front. For outdoor applications weather proof case can be supplied against specific requirements.

Please send the following information along with the enquiry.

Dimensions of the tank, Material of Construction, liquid stored, density, pressure, temperature, viscosity, corrosivity, range of measurement, type of casing required, distance from the tank to the panel, and any other relevant details which may need special mention.

| Standard Ranges | Scale Length/ Size | Tank Height in terms of water | | |
|-----------------|--------------------|-------------------------------|---------|----------|
| | | | | |
| MANOMETER TYPE | 30 cms | 30 cms | 90 cms | 400 cms |
| | 50 cms | 50 cms | 145 cms | 680 cms |
| | 80 cms | 80 cms | 230 cms | 1100 cms |
| | 100 cms | 100 cms | 290 cms | 1350 cms |
| | 120 cms | 120 cms | 350 cms | 1600 cms |
| DIAL TYPE | 90° - 270° | 10 m | 50 m | 100 m |

Non return valves (diaphragm operated), Manifolds, contacts for alarms and for control of level, annunciator panels, and centralised panels with complete system mounted and tubed can be supplied against specific requirements. Any other materials of construction and scale ranges available on request.

CONTACT:

TELEFLO INDIA CO. PVT. LTD.

H.O.: 70'D/3, CENTRAL AVENUE ROAD, NEXT TO BANK OF MAHARASHTRA,
NEAR CHEMBUR RLY. STATION, BOMBAY-400 071.

TEL.: 5555345

FAX : (022)-5553689